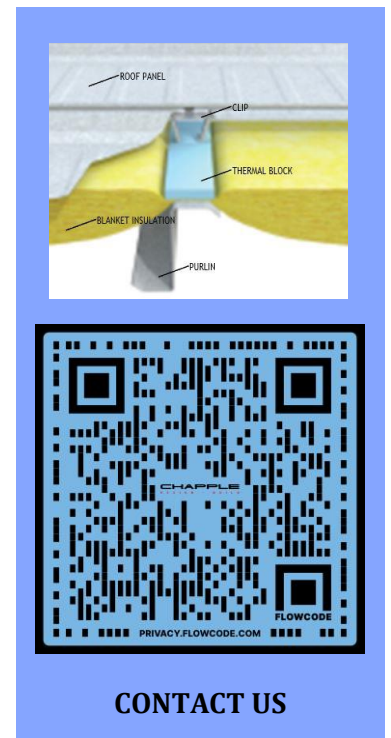


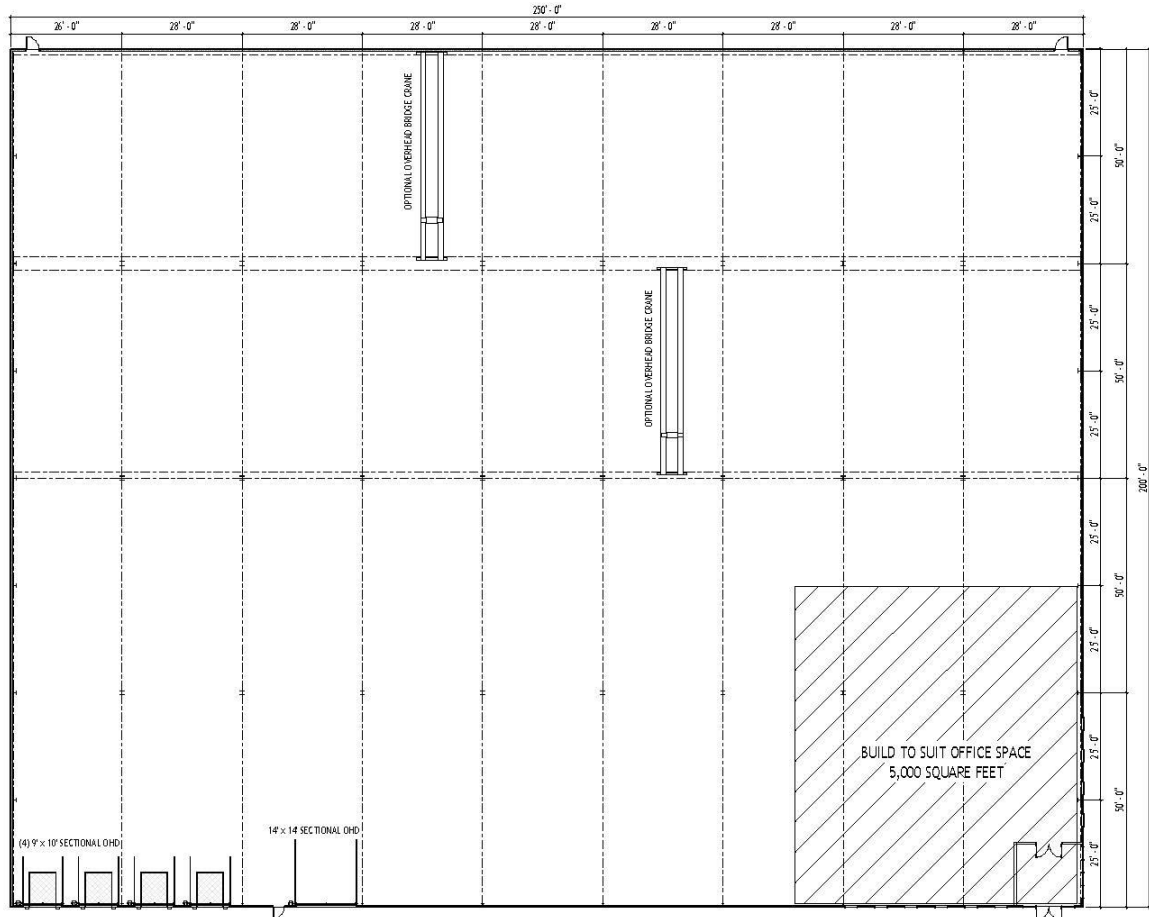


Building Features

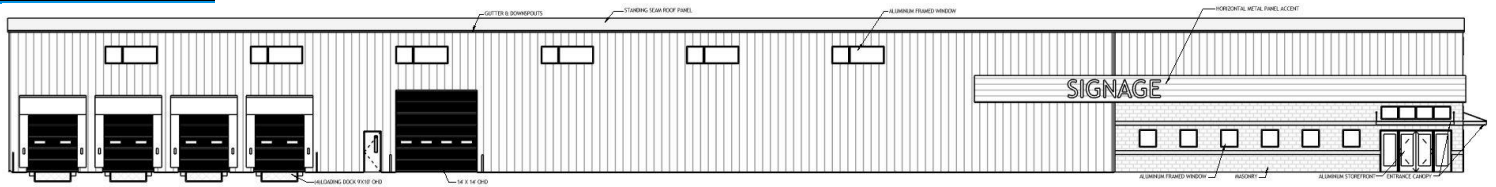
- Building dimensions are 200' wide x 250' long x 24' tall
- 50,000 sq. ft. virtual building is well suited for most any industrial or manufacturing applications
- All architectural and engineering fees, and state building plan approval for commercial applications
- Structure designed for (2) 10-ton overhead cranes and easy expansion
- Durable and attractive prefinished wall panel and the time-tested standing seam roof
- (1) 14'x14' overhead doors, (4) loading dock, hollow metal windows and entry doors, daylighting in production area
- 6" thick reinforced concrete slab, 8' tall interior metal liner panel, and (2) crane runways
- 1200 amp, three phase electrical service, LED lighting, exterior illumination, and utility allowance
- Build to suit office area
- Approximate 10-month construction timeline from permit approval



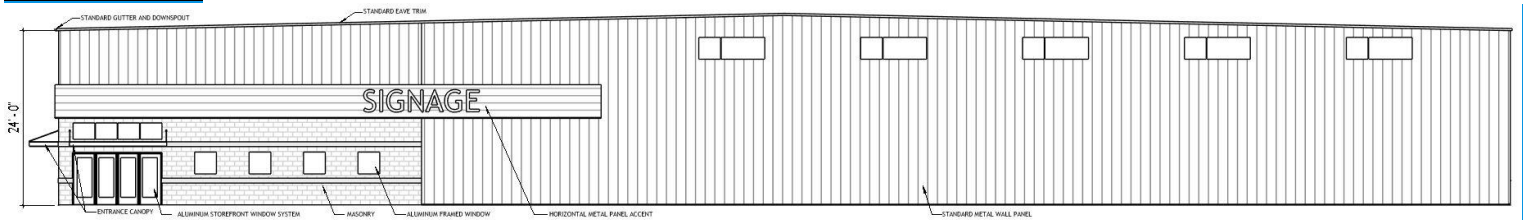
FLOOR PLAN



FRONT ELEVATION



SIDE ELEVATION



BUILDING FEATURES

- **BUILDING USE:** well suited for most any industrial or manufacturing applications
- **SIZE:** 50,000 sq. ft. 200' wide x 250' long x 24' tall
- (1) 14'x14' overhead doors, (4) loading dock, hollow metal windows and entry doors, daylighting in production area
- All fees & state building plan approval for commercial uses
- Architectural enhancements suitable for typical protective covenant requirements
- Structure designed for (2) 10-ton overhead cranes and easy expansion
- Metal wall panels and standing seam roof
- 6" thick reinforced concrete slab, 8' tall interior metal liner panel, and (2) crane runways
- 1200 amp, three phase electrical service, LED lighting, and exterior illumination
- Utility allowance
- Build to suit office area
- Approximate 10-month construction timeline