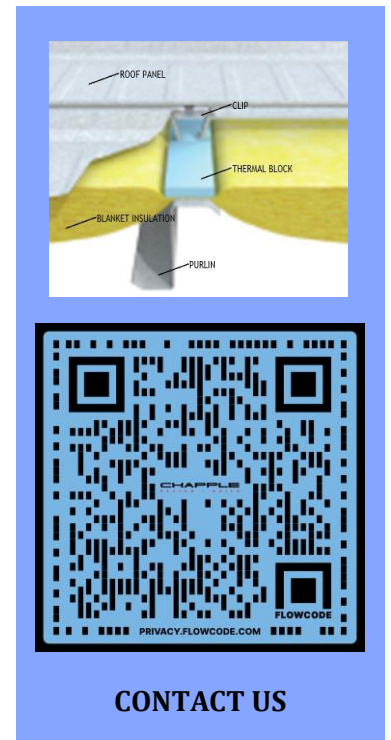


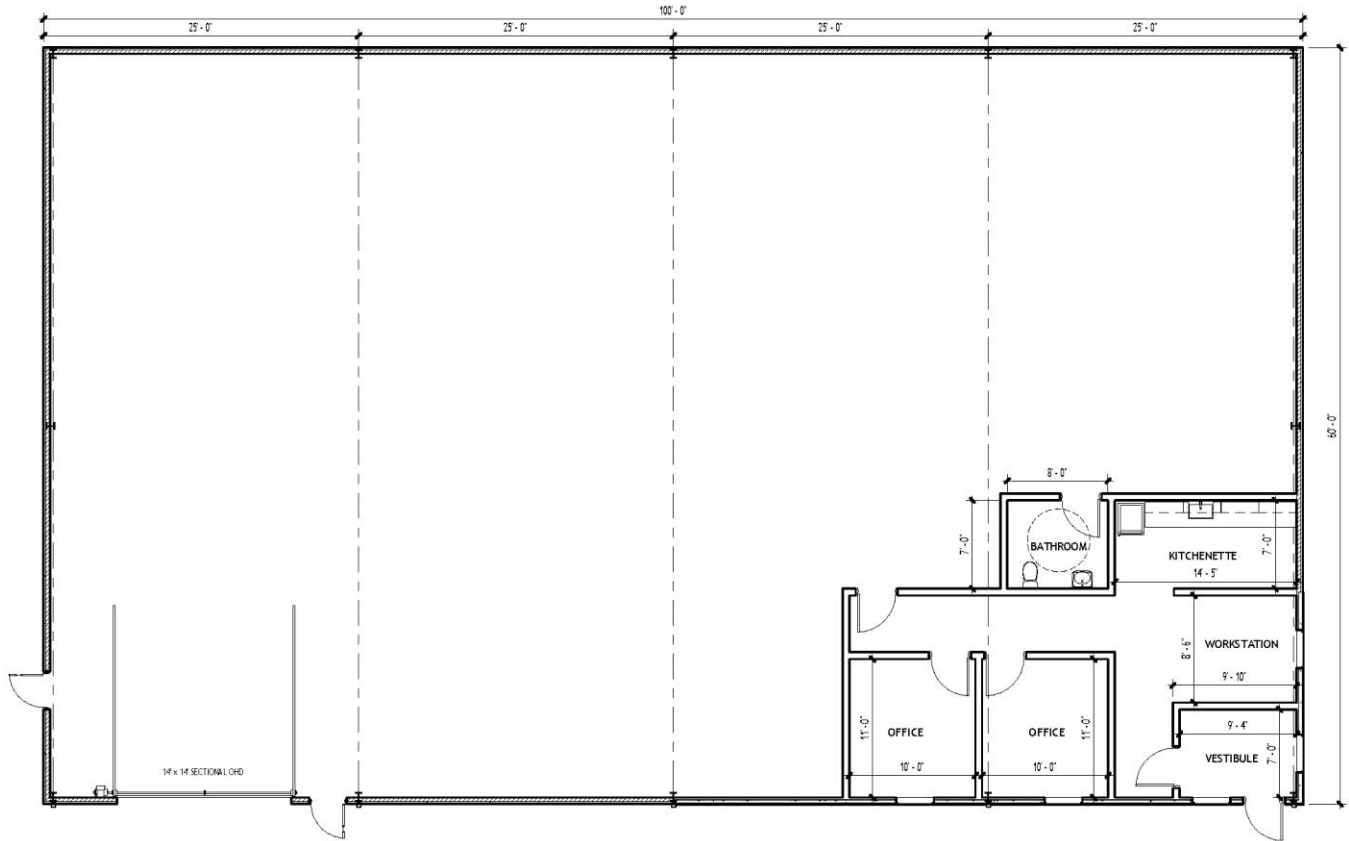


Building Features

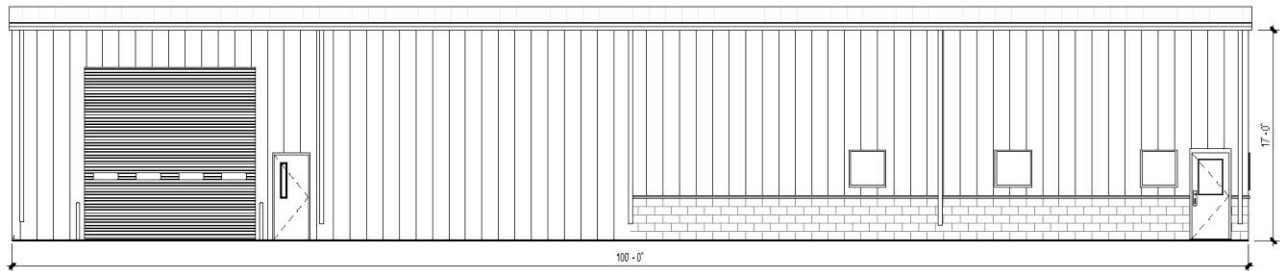
- Building dimensions are 60' wide x 100' long x 17' tall
- 6,000 sq. ft. virtual building is perfect for startup businesses, light manufacturing and assembly, storage, or machining applications
- All architectural and engineering fees, and state building plan approval for commercial applications
- Structure designed for easy expansion in three directions
- Durable and attractive prefinished wall panel and the time-tested standing seam roof
- (1) 14'x14' overhead doors, hollow metal windows and entry doors
- 6" thick reinforced concrete slab, 8' tall interior metal liner panel, and insulated to commercial building code standards
- 400 amp, three phase electrical service, LED lighting, and exterior illumination
- Utility allowance
- (2) private offices, kitchenette, and unisex bathroom
- Approximate 4-month construction timeline from permit to approval



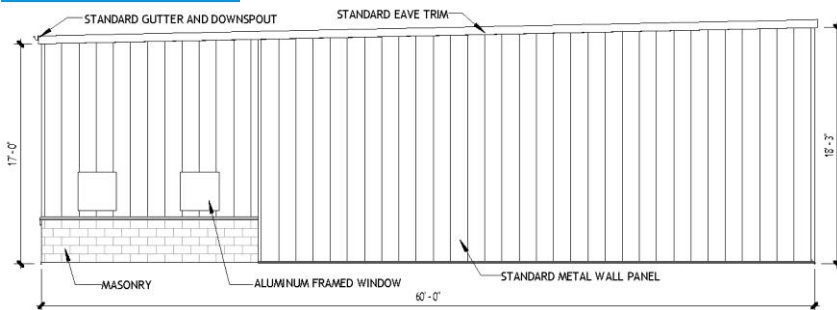
FLOOR PLAN



FRONT ELEVATION



SIDE ELEVATION



BUILDING FEATURES

- **BUILDING USE:** startup businesses, light manufacturing and assembly, storage, or machining applications
- **SIZE:** 6,000 sq. ft. 60' wide x 100' long x 17' tall
- (1) 14'x14' overhead doors, hollow metal windows and entry doors
- All fees & state building plan approval for commercial uses
- Structure designed for easy expansion in three directions
- Metal wall panels and standing seam roof
- 6" thick reinforced concrete slab, 8' tall interior metal wall liner panel, and insulated to commercial building code standards
- 400 amp, three phase electrical service, LED lighting, and exterior illumination
- (2) private offices, kitchenette, and unisex bathroom
- Approximate 4-month construction timeline